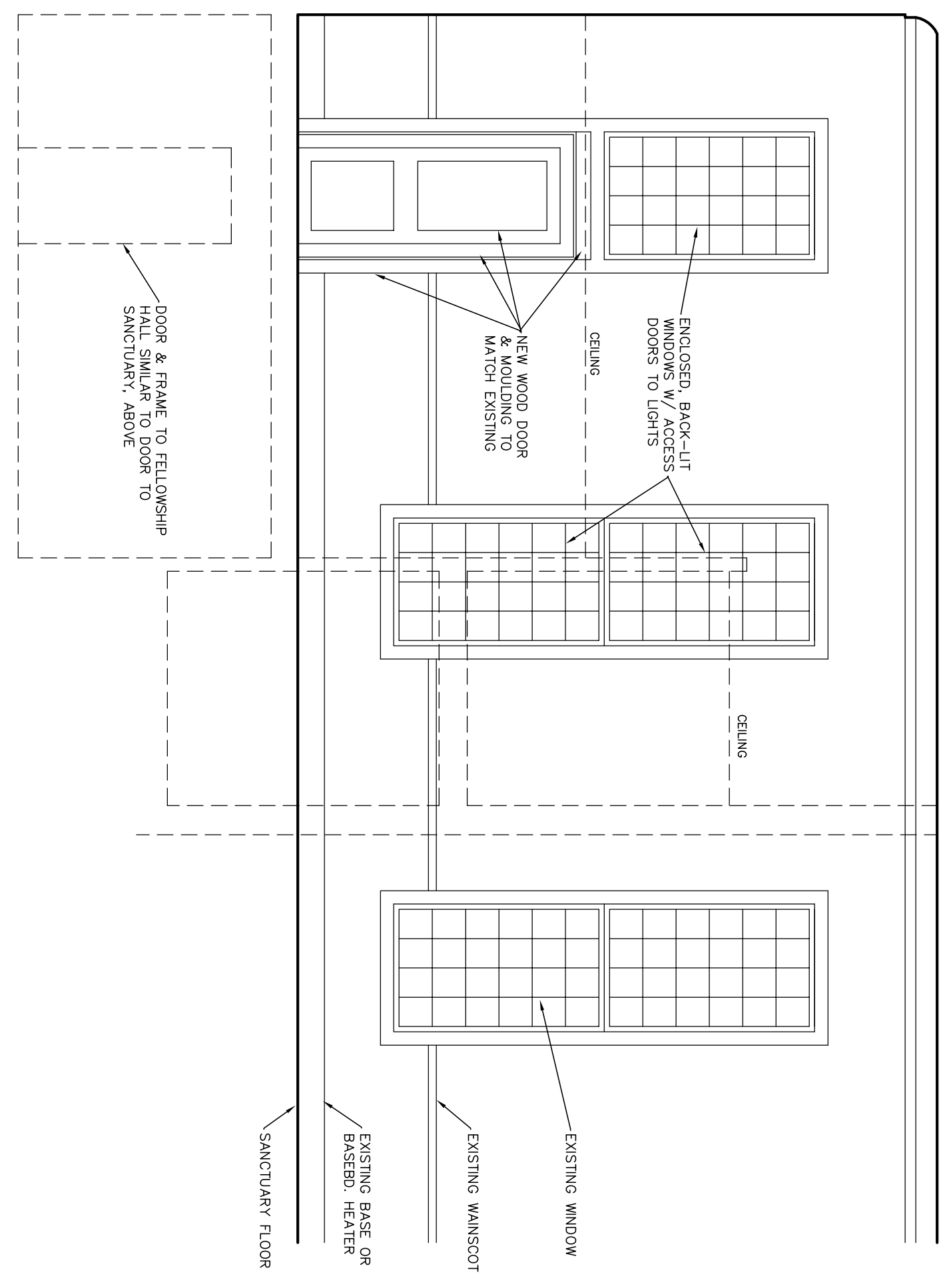
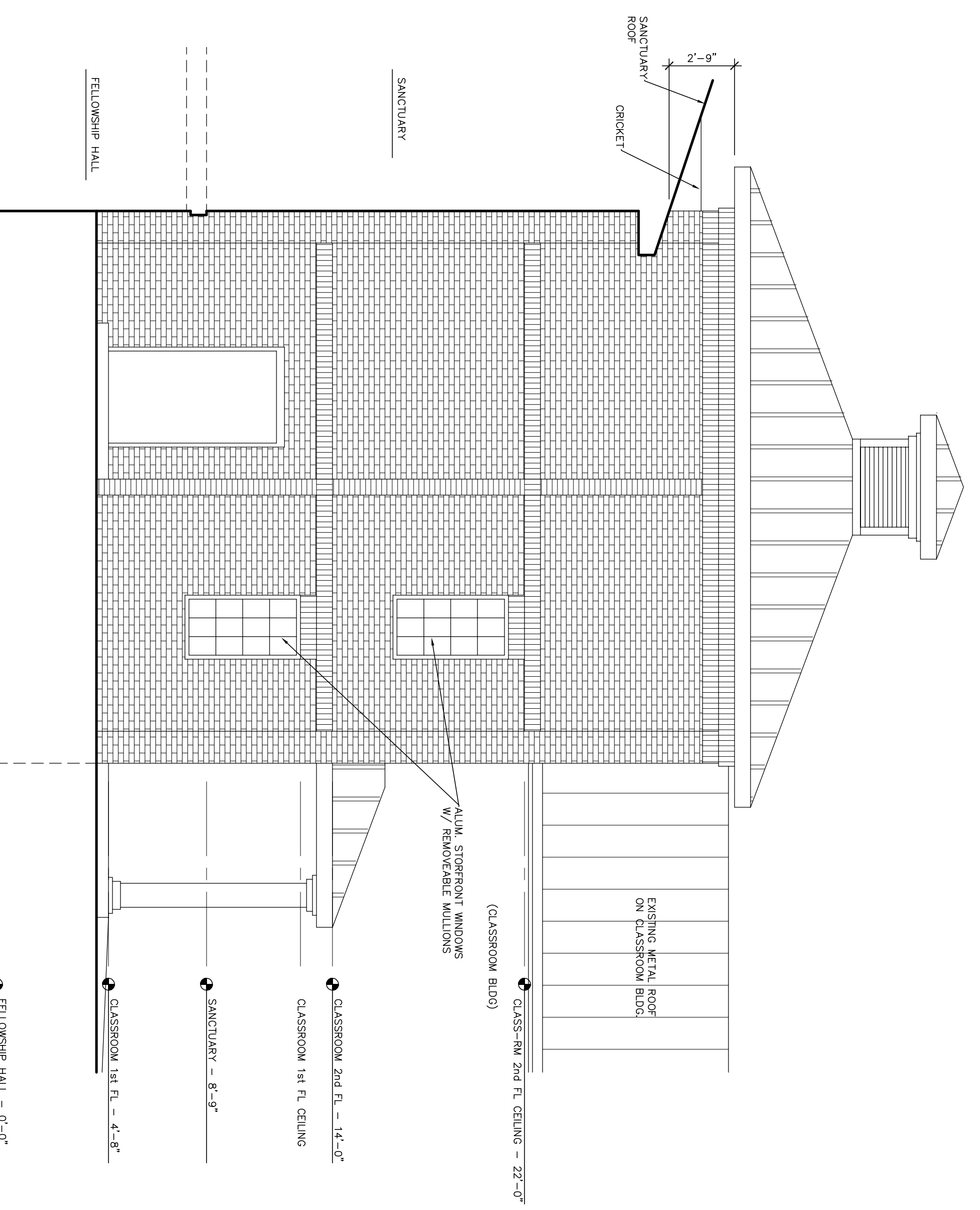


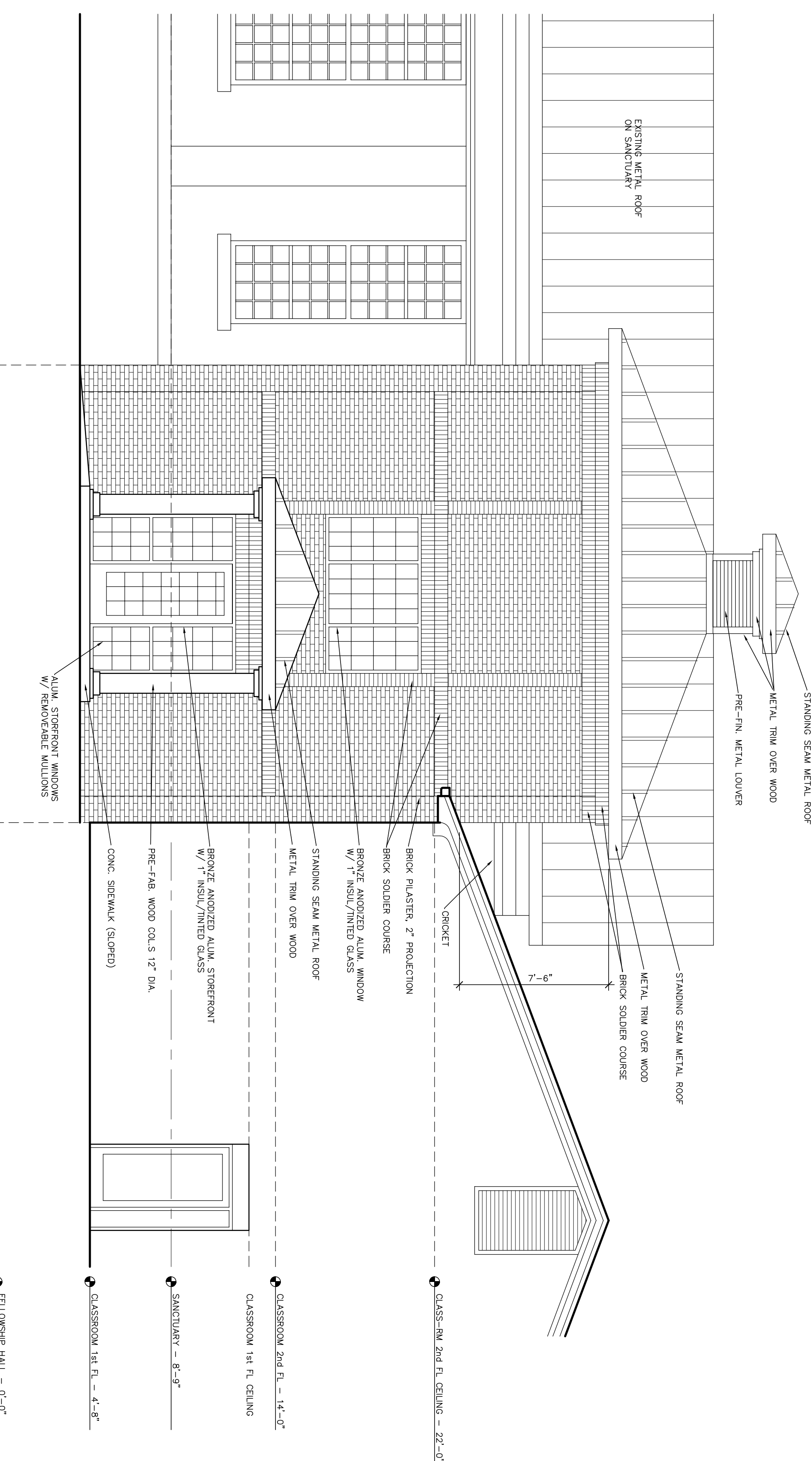
**4 ELEVATOR LOBBY INT. ELEVATION**  
A5 1/4" = 1'-0"



**3 SANCTUARY INTERIOR ELEVATION**  
A5 1/4" = 1'-0"



**2 LEFT SIDE ELEVATION (east)**  
A5 1/4" = 1'-0"



**1 FRONT ELEVATION (south)**  
A5 1/4" = 1'-0"

**Winterville United Methodist Church  
Elevator Addition & Bathroom Renovation**

101 Parkview Road, Winterville, Georgia 30683

**Camp Architects**

Camp Architects, Inc. camparch@aol.com  
P.O. Box 3386 Atlanta, Georgia 30302 404-523-2509

DRAWN: WCC  
APPROVED: WCC  
COMM. NO.: 2002  
DATE: JUNE 8, 2020  
REVISIONS:  
RELEASED FOR CONSTR.

SHEET TITLE  
ELEVATIONS

SHEET NO.

**A5**

6 OF 8