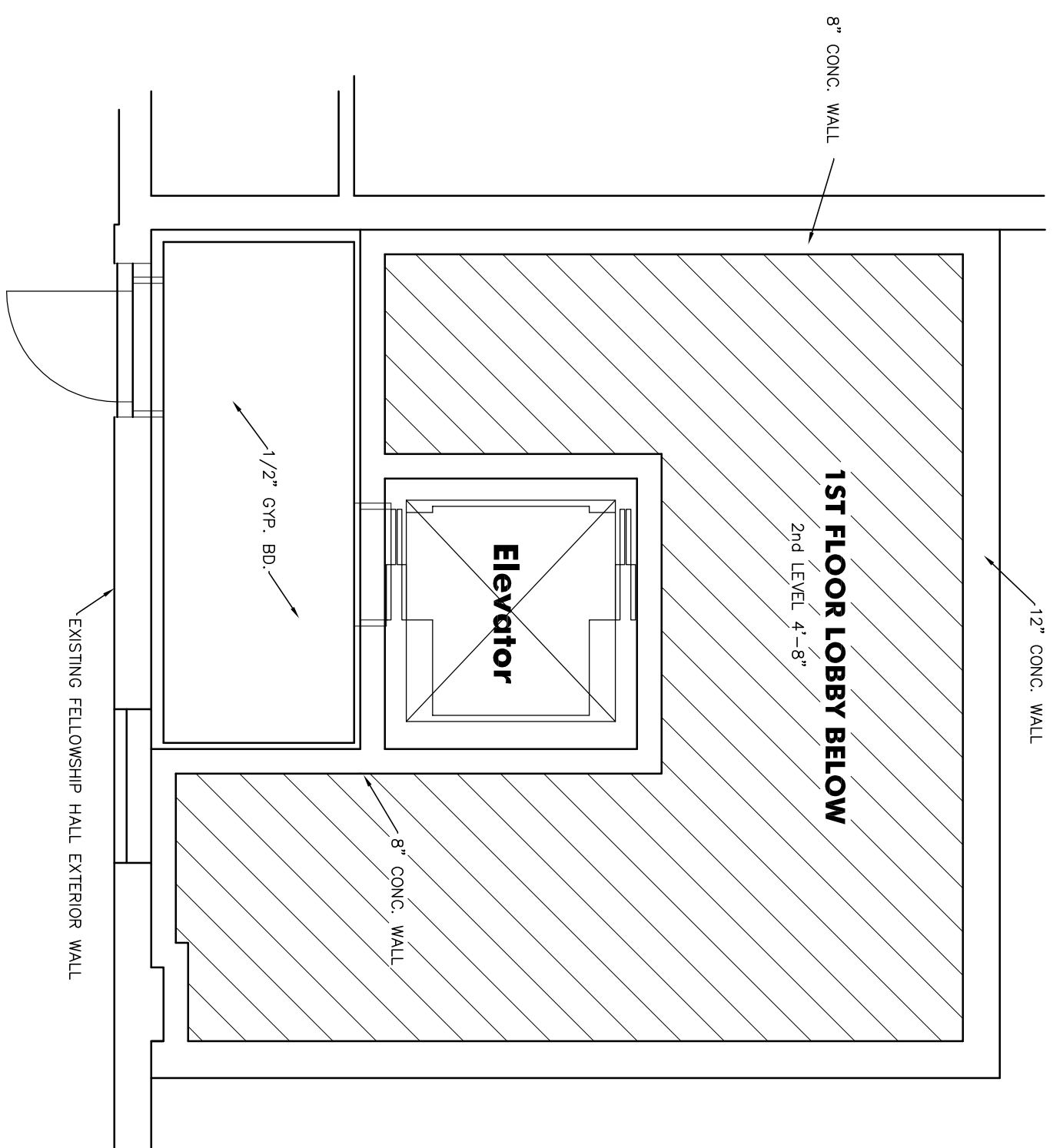


**3rd LEVEL - FRAMING PLAN**

1/4" = 1'-0"

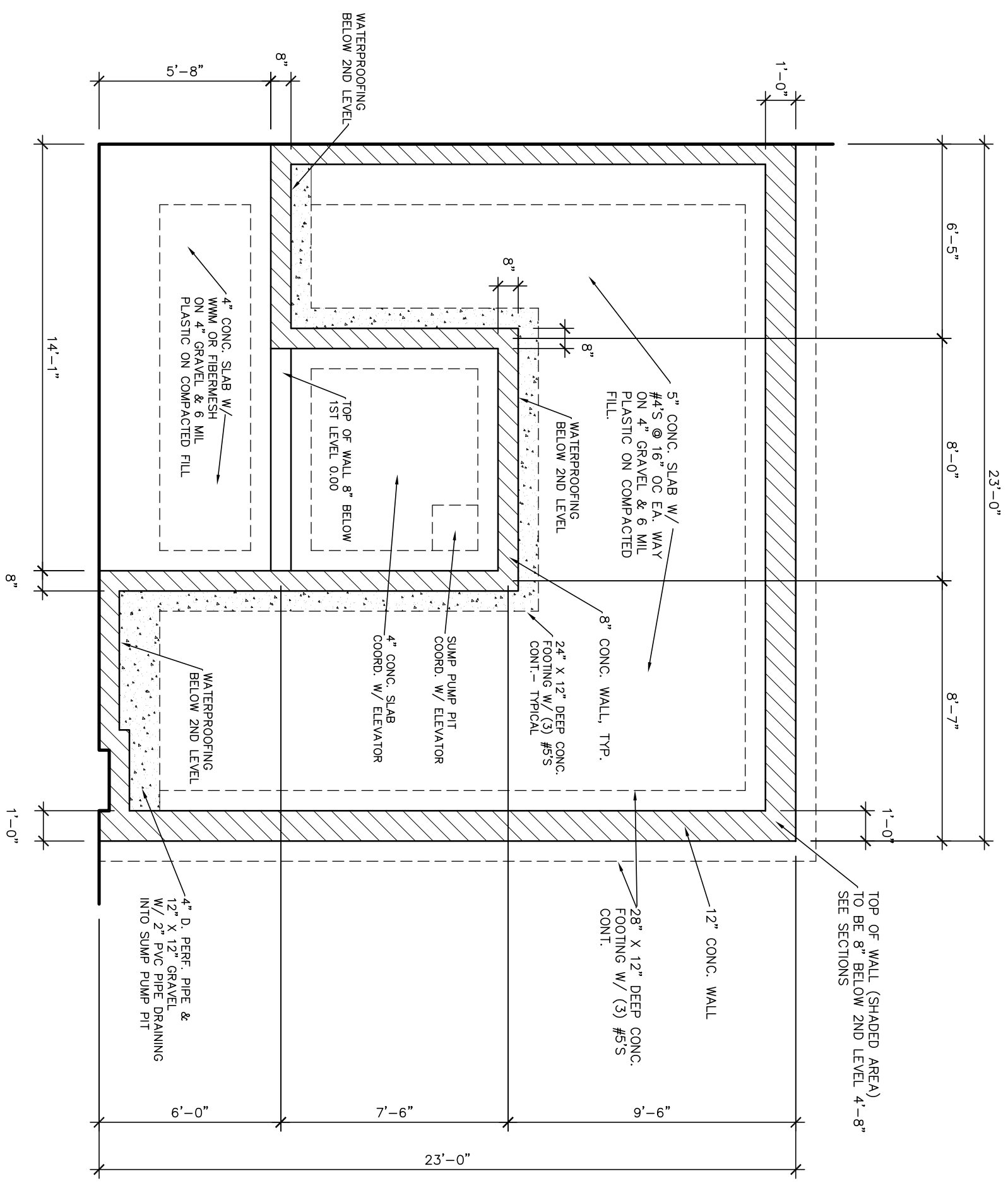
3rd LEVEL 8'-9"



**FELLOWSHIP HALL LEVEL - CEILING PLAN**

1/4" = 1'-0"

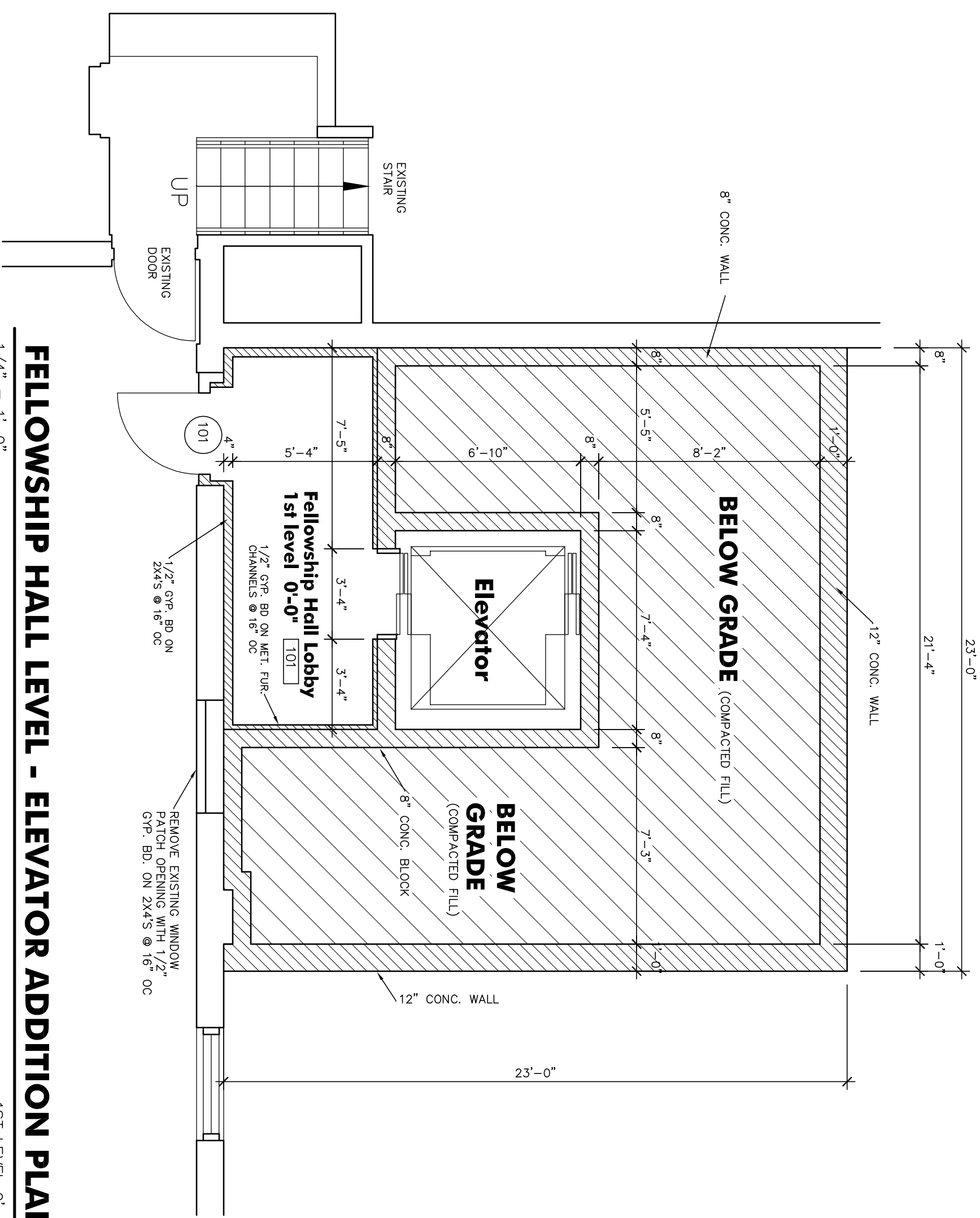
1st LEVEL 0'-0"



**FELLOWSHIP HALL LEVEL - FOUNDATION PLAN**

1/4" = 1'-0"

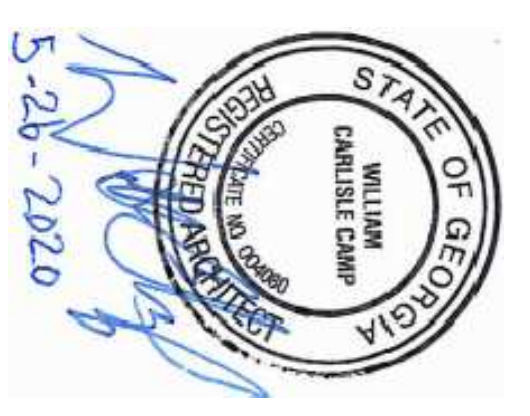
1st LEVEL 0'-0"



**FELLOWSHIP HALL LEVEL - ELEVATOR ADDITION PLAN**

1/4" = 1'-0"

1st LEVEL 0'-0"



**Winterville United Methodist Church  
Elevator Addition & Bathroom Renovation**

101 Parkview Road, Winterville, Georgia 30683

**Camp Architects**

Camp Architects, Inc. camparch@aol.com  
P.O. Box 3386 Atlanta, Georgia 30302 404-523-2509

DRAWN: WCC  
APPROVED: WCC  
COMM. NO.: 2002  
DATE: JUNE 8, 2020  
REVISIONS:  
RELEASED FOR CONSTR.

SHEET TITLE:  
**FELLOWSHIP HALL LEVEL  
ELEVATOR ADDITION  
PLAN**  
SHEET NO.

**A1**

2 OF 8