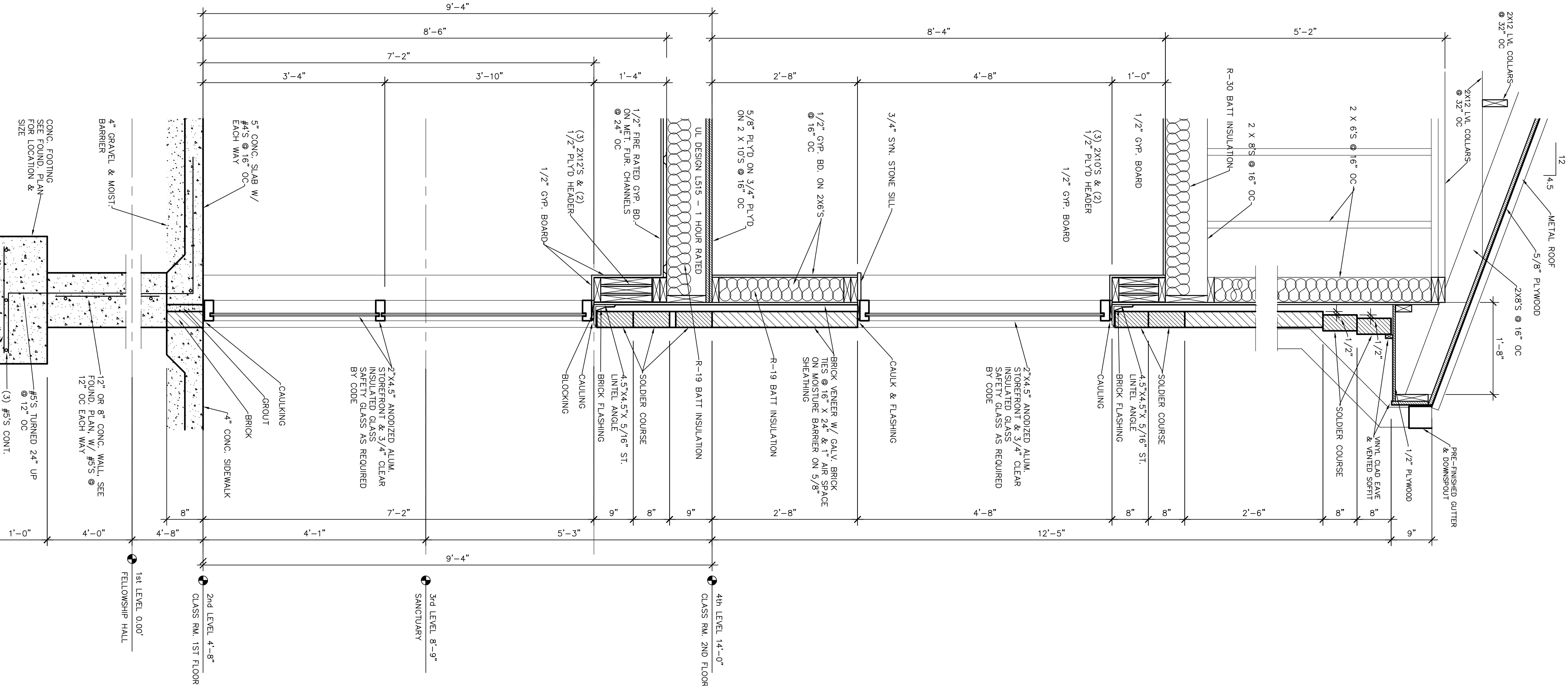


2
A6
3/4" = 1'-0"

TYPICAL WALL SECTION

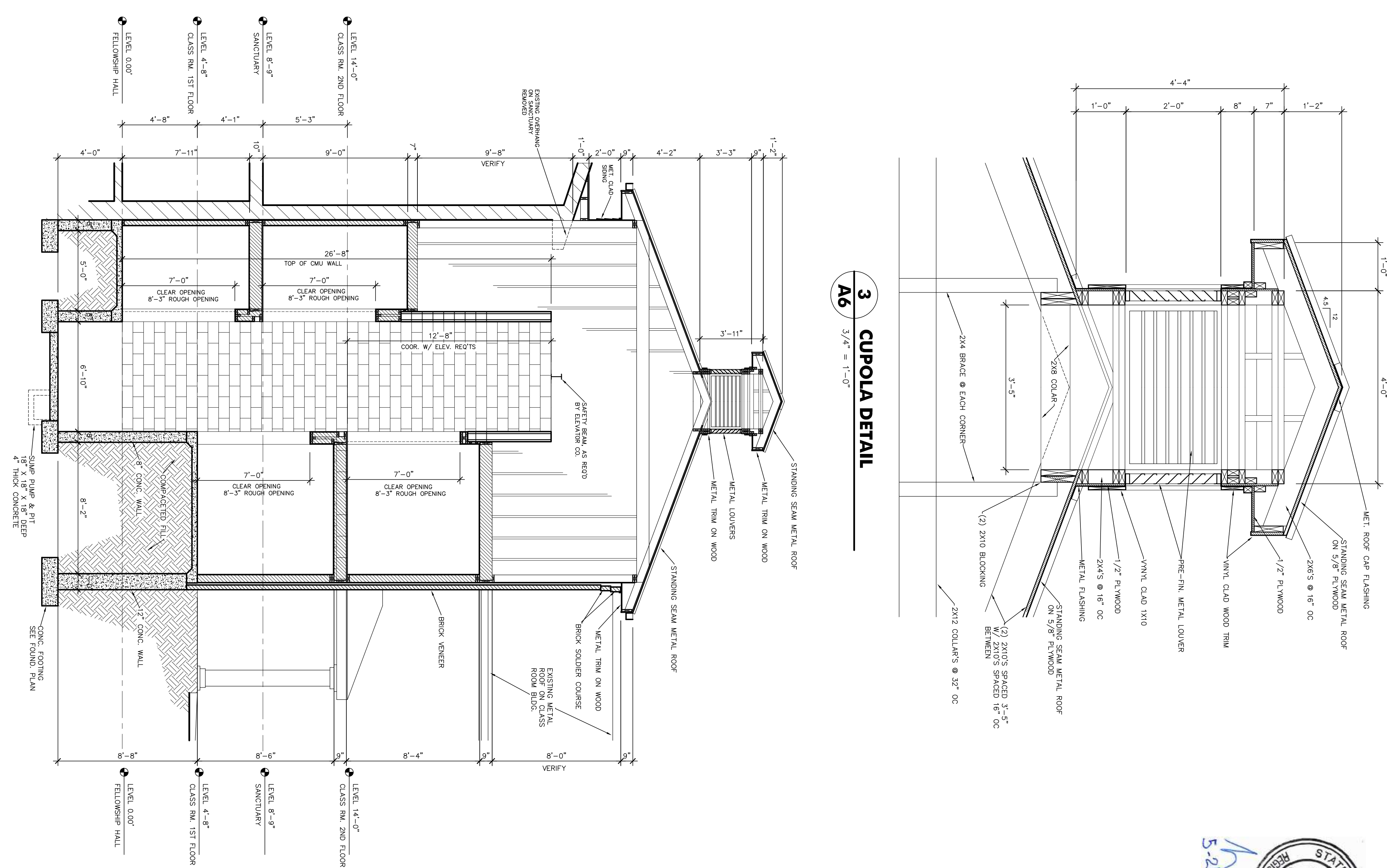
CONC. FOOTING
SEE FOUND. PLAN
FOR DIMENSIONS &
SIZE
2'-4" @ 12" WALL
2'-0" @ 8" WALL
#5'S @ 12" OC
#5'S @ 12" OC
(3) #5'S CONT.



1
A6
1/4" = 1'-0"

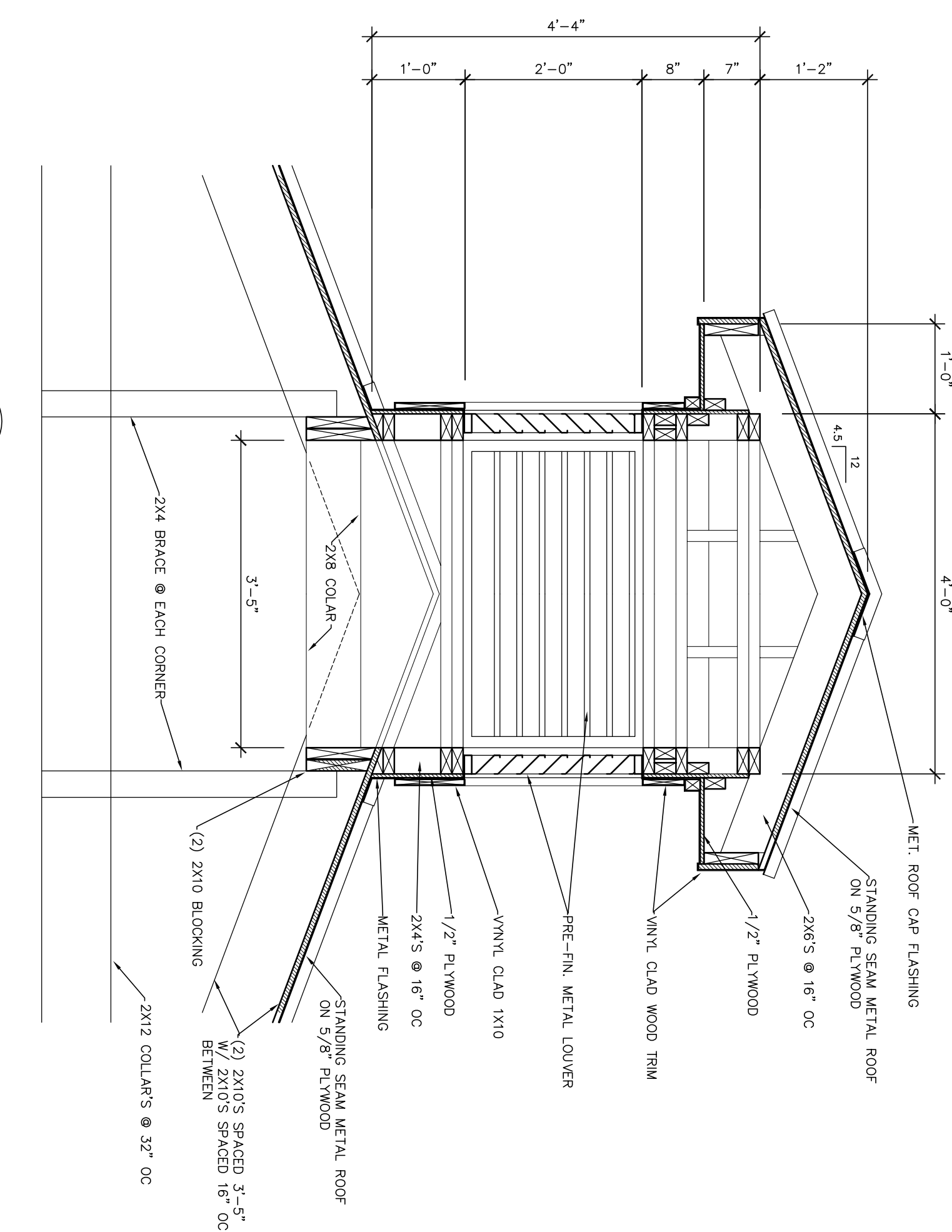
SECTION THRU ELEVATOR

CONC. FOOTING
SEE FOUND. PLAN
FOR DIMENSIONS &
SIZE
2'-4" @ 12" WALL
2'-0" @ 8" WALL
#5'S @ 12" OC
#5'S @ 12" OC
(3) #5'S CONT.



3
A6
3/4" = 1'-0"

CUPOLA DETAIL



**Winterville United Methodist Church
Elevator Addition & Bathroom Renovation**
101 Parkview Road, Winterville, Georgia 30683

Camp Architects
Camp Architects, Inc. camparch@aol.com
P.O. Box 3386 Atlanta, Georgia 30302 404-523-2509

A6
7 OF 8
SHEET NO.
SECTIONS & WALL SECTIONS
DRAWN: WCC
APPROVED: WCC
COMM. NO.: 2002
DATE: JUNE 8, 2020
REVISIONS:
RELEASED FOR CONSTR.