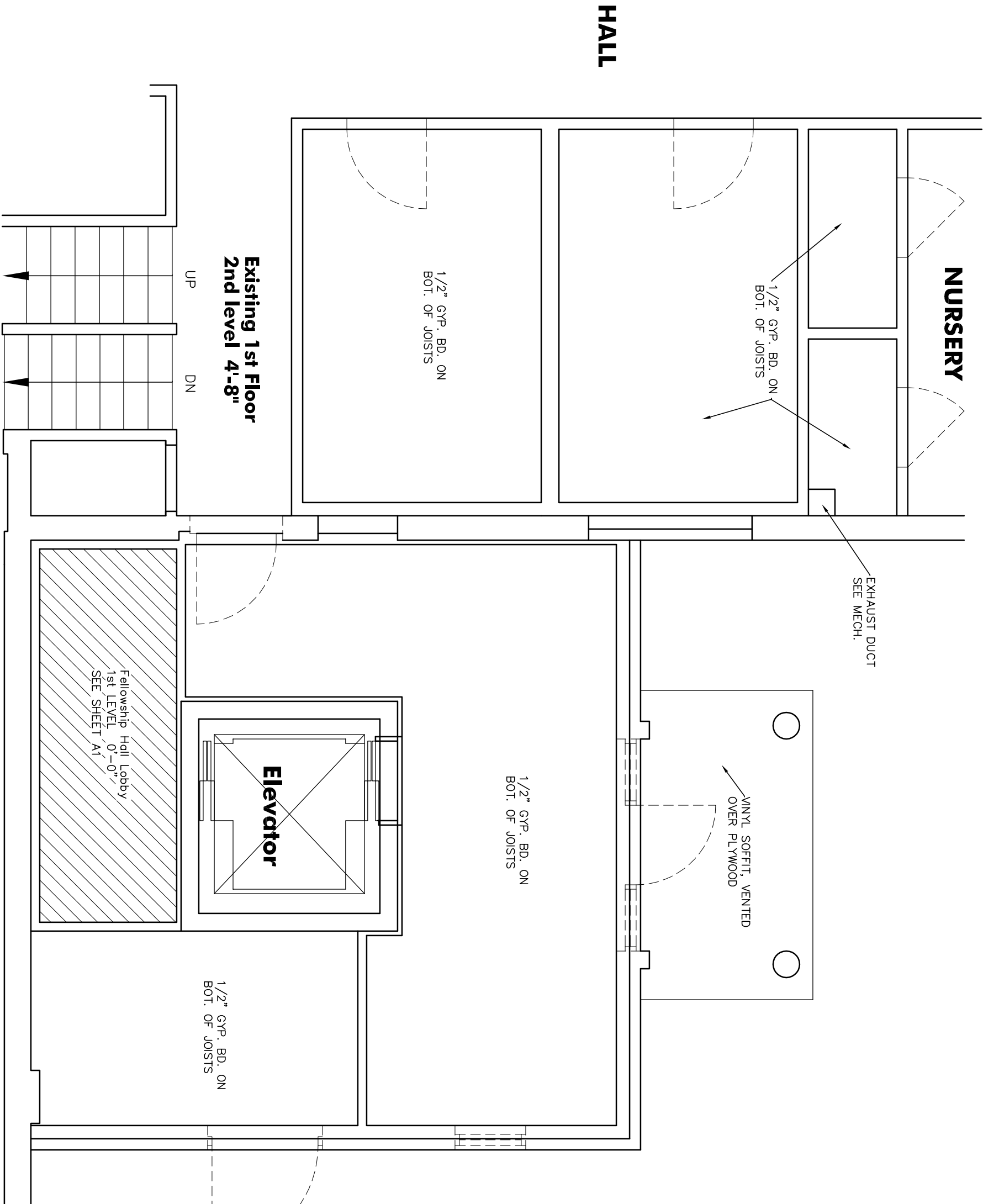


- TOILET ACCESSORIES LEGEND**
- ACCESSORIES ARE BASED ON PRODUCTS BY THE COMPANY. MANUFACTURER'S EQUIPMENT, UNLESS NOTED OTHERWISE, REQUIRES APPROVAL FOR EQUAL PRODUCTS FROM OTHER MANUFACTURERS. MOUNTING HEIGHTS & INSTALLATION AS RECOMMENDED BY MANUF.
- A MIRROR
 - B TISSUE DISP.
 - C H.C. GRAB BARS
 - D TOWEL HOOKS
 - E PAPER TOWEL DISP.
 - F TOILET PARTITION
 - G SOAP DISPENSER
- B-105, 24" X 36" W/ SS FRAME
 B-2142, SURF. MTD. TOILET TISSUE DISPENSER (HOLDS 2 ROLLS)
 B-4931, 36" X 54" SS TOILET GRAB BAR ("S" SHARED, EXP. MTD)
 OR B-490 X 36" & B-490 X 42"
 B-211, SS ROBE HOOKS W/ EXP. MTD
 B-242, SURF. MTD. PAPER TOWEL DISPENSER (400 C-FOLD)
 BOBROCK, 1042 SERIES, PLASTIC LAUNDRY FLOOR MTD. OVERHEAD BRACED W/ STANDARD HARDWARE, TYP. DOOR = 24" WIDE, HC DOOR = 32" CLEAR
 STAINLESS STEEL, WALL MOUNTED

CLASSROOM BLDG - 2ND FLOOR ELEVATOR - FRAMING PLAN
 1/4" = 1'-0"
 4th LEVEL 14'-0"



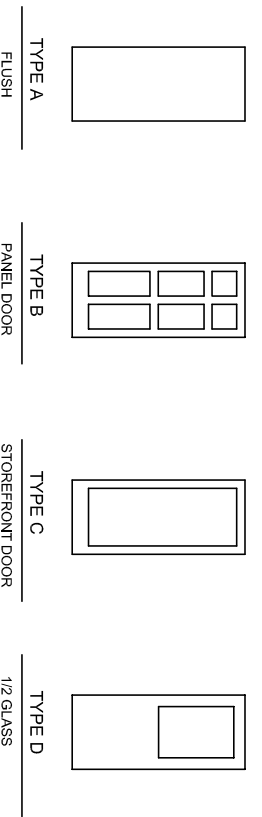
CLASSROOM BLDG - 1ST FLOOR ELEVATOR - CEILING PLAN
 1/4" = 1'-0"
 2nd LEVEL 4'-8"

DOOR SCHEDULE				FRAME						
NO.	TYPE	SIZE	MATL.	HYPHRE	LABEL	MATL.	JAMB	HEAD	THROD	REMARKS
101	E	3'-0" X 6'-6"	WD	1"		MANUF'S STANDING				- W/ CLOSER
201	C	3'-0" X 7'-0"	ALUM.	1		MANUF'S STANDING				
202	A	3'-0" X 7'-0"	HOLMET	1		MANUF'S STANDING				
203	A	3'-0" X 6'-6"	WD	2		MANUF'S STANDING				
204	A	3'-0" X 6'-6"	WD	5		MANUF'S STANDING				
206	A	3'-0" X 6'-6"	WD	4		MANUF'S STANDING				
207	A	3'-0" X 6'-6"	WD	3		MANUF'S STANDING				
301	B	3'-0" X 8'-0"	WD	2		MANUF'S STANDING				*MATCH EXISTING HEIGHT & STYLE
401	A	3'-0" X 6'-6"	WD	3		MANUF'S STANDING				
402	A	3'-0" X 6'-6"	WD	2		MANUF'S STANDING				
403	A	3'-0" X 6'-6"	WD	3		MANUF'S STANDING				
404	A	3'-0" X 6'-6"	WD	5		MANUF'S STANDING				
204	A	3'-0" X 6'-6"	WD	5		MANUF'S STANDING				

DOOR NOTES

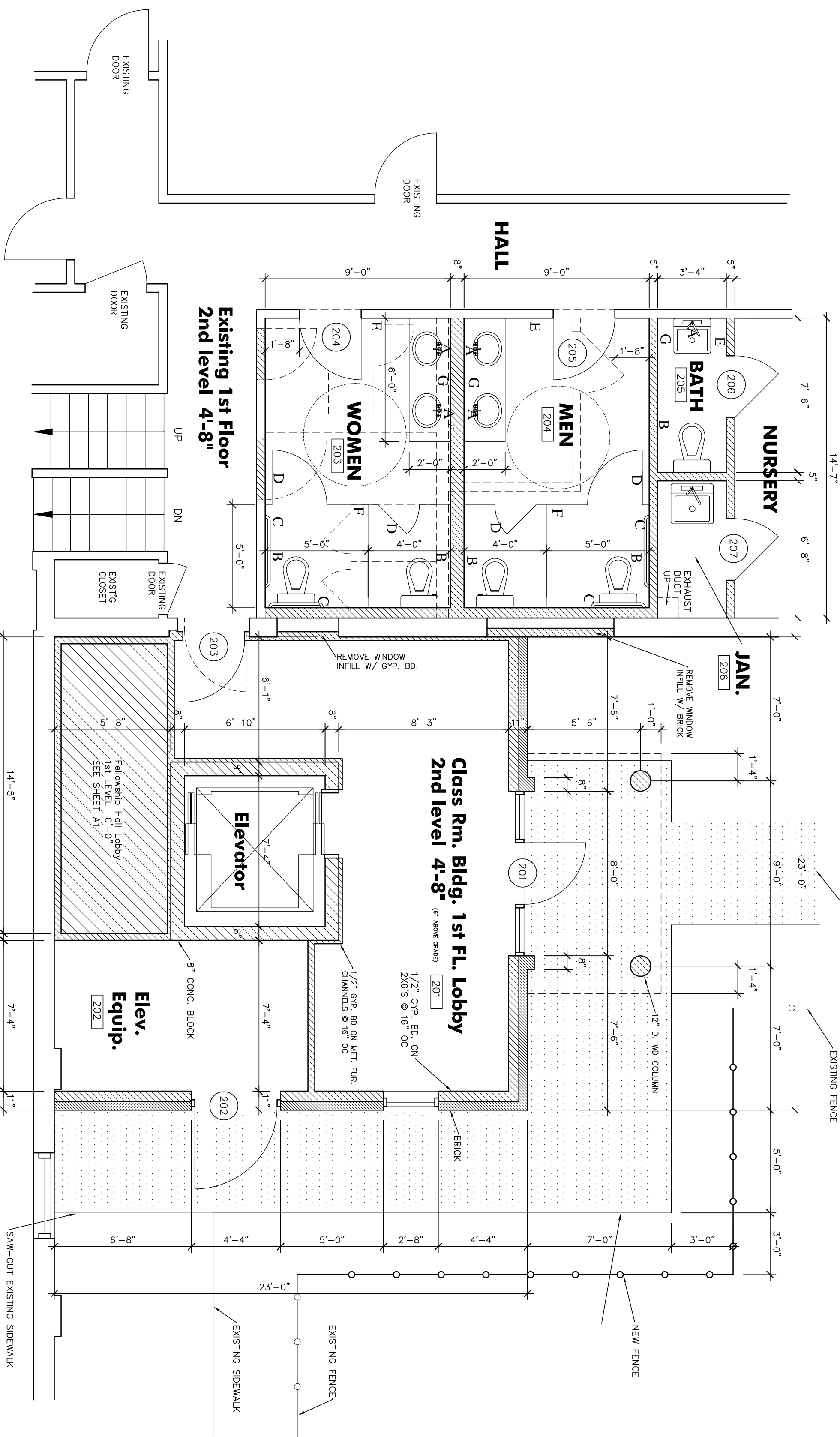
- SET QUANTITIES ARE FOR SINGLE DOORS; INCREASE QUANTITIES AS REQUIRED FOR DOUBLE DOORS. ADD FLASH BOLTS & BOTTOM BOLTS FOR DOUBLE DOORS.
- ADD HINGES TO COMPLY WITH MANUFACTURER'S RECOMMENDATIONS OF ANSI A117.1
- ALL DOORS TO INCLUDE 3 SLIPSTOPS AND DOOR STOPS.
- ALL FIRE RATED DOORS TO HAVE FIRE RATED FRAMES OF EQUAL RATING.
- DOOR FRAMES, JAMBS & HEADS TO BE MANUF'S STANDARD UNLESS NOTED OTHERWISE.
- METAL FRAMES IN MASONRY WALLS TO BE 7'-4" HIGH WITH 4" HEAD AND 2" JAMBS.
- WOOD DOORS TO BE SOLID CORE, STAIN GRADE.
- FIRE RATED DOORS TO INCLUDE CLOSERS.
- EXIT DOOR LOCKS TO BE EQUIPPED W/ HUMBUCTION ON INTERIOR TO ALLOW EMERGENCY EXIT.

DOOR TYPES



HARDWARE SCHEDULE

- SET NO. 1 - TYPICAL EXTERIOR DOOR
 - 1 HINGES
 - 2 CYLINDER LOCKSET KEYS FROM OUTSIDE
 - 1 STOP
 - 1 WINDSTOP
 - 1 WINDSTRIP & BOTTOM GASKET
- SET NO. 2 - TYPICAL INTER. DOOR - NO LOCK
 - 1 HINGES
 - 1 LATCHSET, PASSAGE ONLY
 - 1 SET PUSH-PULL HARDWARE
 - 1 CLOSER
- SET NO. 3 - TYPICAL INTER. DOOR W/ LOCK
 - 1 HINGES
 - 1 LOCKSET W/ HUMBUCTION ON INSIDE
 - 1 STOP
 - 1 SMALL BATHROOM
- SET NO. 4 - SMALL BATHROOM
 - 1 HINGES
 - 1 LOCKSET W/ HUMBUCTION ON INSIDE
 - 1 STOP
- SET NO. 5 - LARGE BATHROOM
 - 1 HINGES
 - 1 SET PUSH-PULL HARDWARE
 - 1 CLOSER



CLASSROOM BLDG - 1ST FLOOR ELEVATOR ADDITION PLAN
 1/4" = 1'-0"
 2nd LEVEL 4'-8"



Camp Architects
 Camp Architects, Inc. camparch@aol.com
 P.O. Box 3386 Atlanta, Georgia 30302 404-523-2509

**Winterville United Methodist Church
 Elevator Addition & Bathroom Renovation**
 101 Parkview Road, Winterville, Georgia 30683

DRAWN: WCC
 APPROVED: WCC
 COMM. NO.: 2002
 DATE: JUNE 8, 2020
 REVISIONS:
 RELEASED FOR CONSTR.

SHEET TITLE:
CLASSROOM 1ST FL. ELEVATOR ADDITION FLOOR PLAN
 SHEET NO. **A2**
 3 OF 8